

UNINTENTIONAL INJURIES IN GREY BRUCE



Unintentional injuries refer to injuries for which there is no evidence of intent (as opposed to intentional injuries like self-harm or assault).

TOP 3 CAUSES OF SEVERE UNINTENTIONAL INJURIES

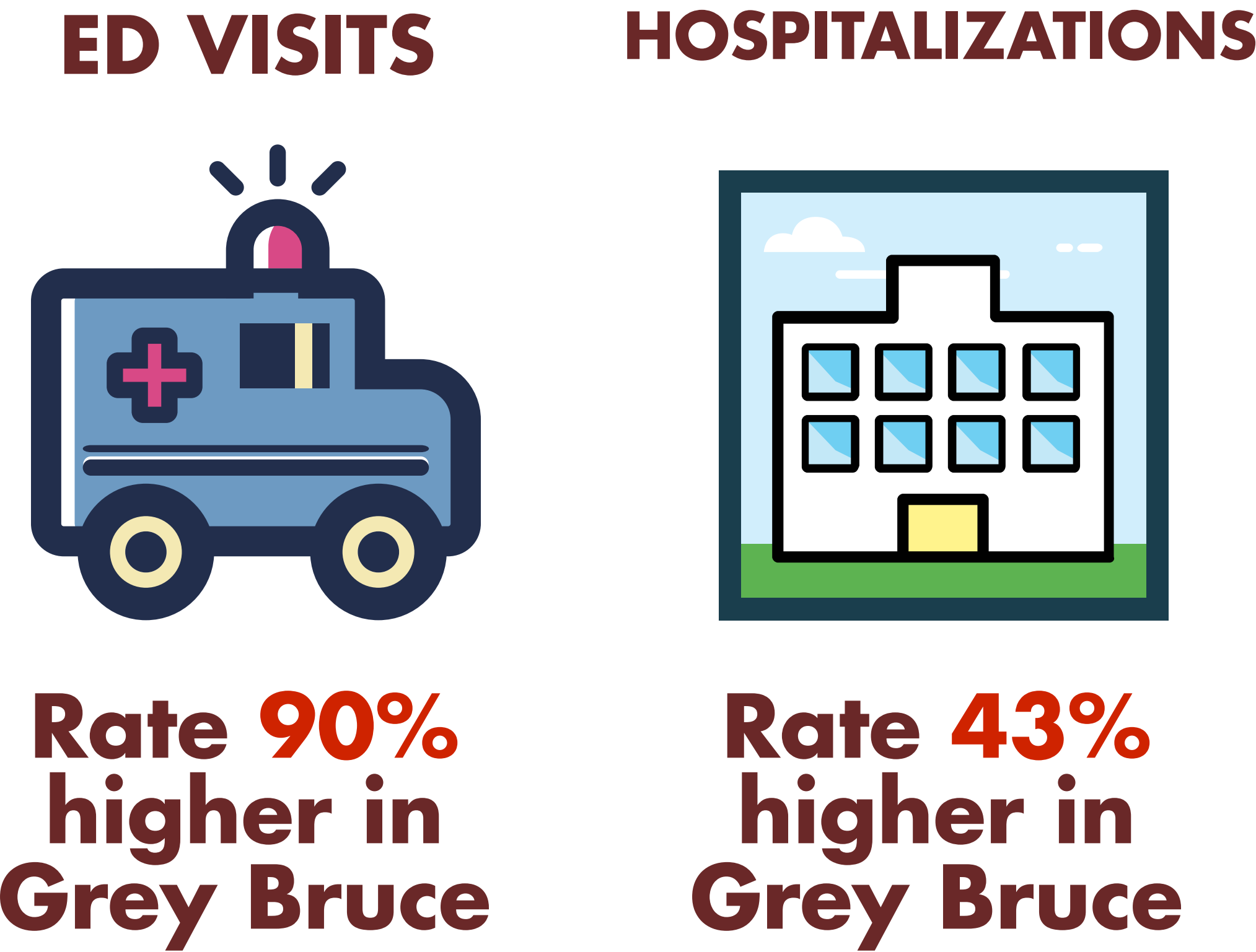


AVERAGE NUMBER OF INCIDENTS PER YEAR



GREY BRUCE RATES HIGHER THAN ONTARIO RATES

The local rate of emergency department (ED) visits for unintentional injuries is 90% higher than the Ontario rate, and the hospitalization rate is 43% higher.

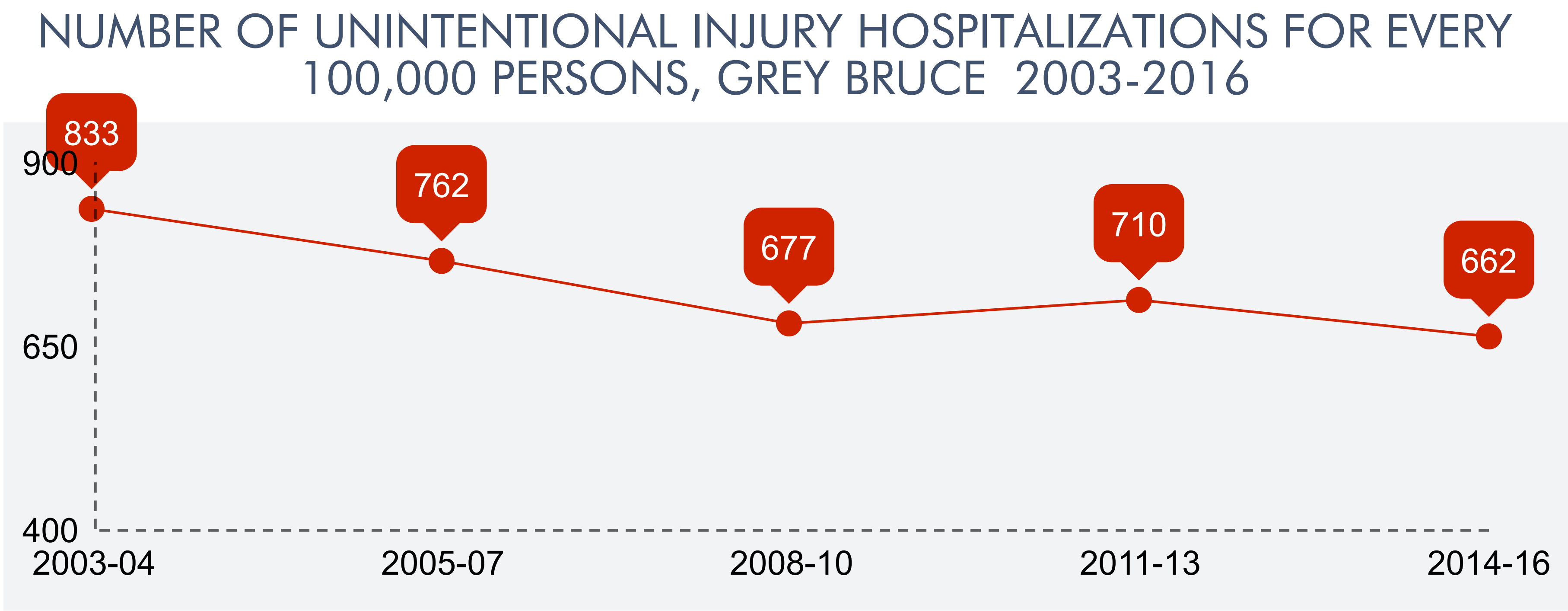


YOUNG MALES AND OLDER ADULTS AT GREATEST RISK

Male residents of Grey Bruce aged 15 to 24 are at greatest risk of visiting the ED for an unintentional injury, while older adults aged 65+ are at greatest risk of being hospitalized or dying from an unintentional injury.

LOCAL HOSPITALIZATION RATE HAS DECREASED

The local rate of hospitalizations for unintentional injuries has decreased by 26% since 2003-04, while rates of ED visits and deaths from unintentional injuries have remained stable. This is largely due to a decrease in hospitalizations from falls.



SOURCES: Ambulatory Visits 2003–2016, Ontario Ministry of Health and Long-term Care, IntelliHEALTH Ontario, Date Extracted: November 26, 2018. Ontario Mortality Data 2003–2015, Ontario Ministry of Health and Long-term Care, IntelliHEALTH Ontario, Date Extracted: February 5, 2019.

DATA NOTES: Rates refer to age-standardized rates. Averages refer to ten-year averages between 2007–2016 for ED visits and hospitalizations, and between 2006–2015 for deaths. Severe injuries refer to injuries resulting in hospitalization or death.

